



# Nintendo Wii Remote Teardown

This guide will show you the information tear down of the Wii remote .

Written By: Demian De La Vega



# INTRODUCTION

Disassembling the remote requires removing screws under the batteries. Removing anything inside will require caution and time .



## TOOLS:

- [Y1 Tri-point Screwdriver](#) (1)

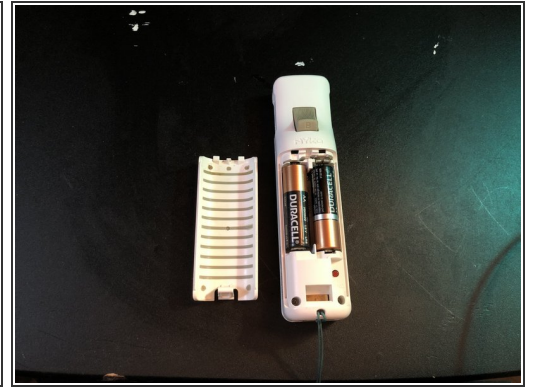
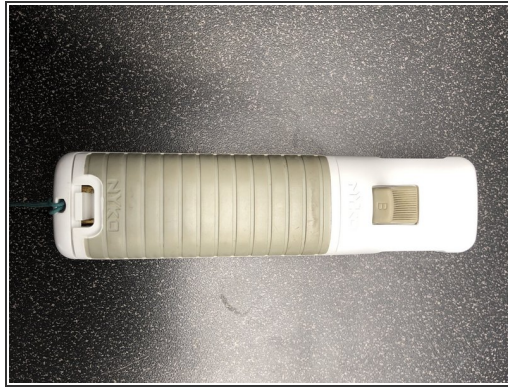
Y1

*This will be used to remove the screws*

- [Flathead Screwdriver](#) (1)
-

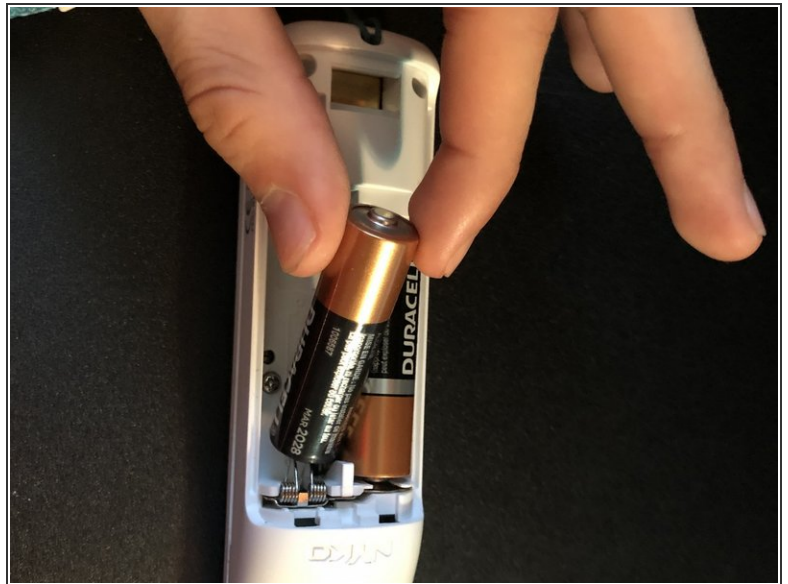
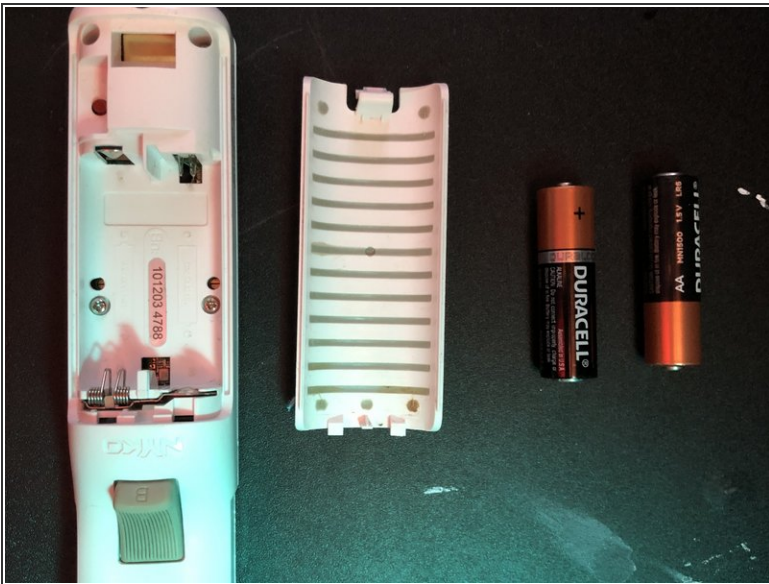


## Step 1 — Removing battery cover and back plate



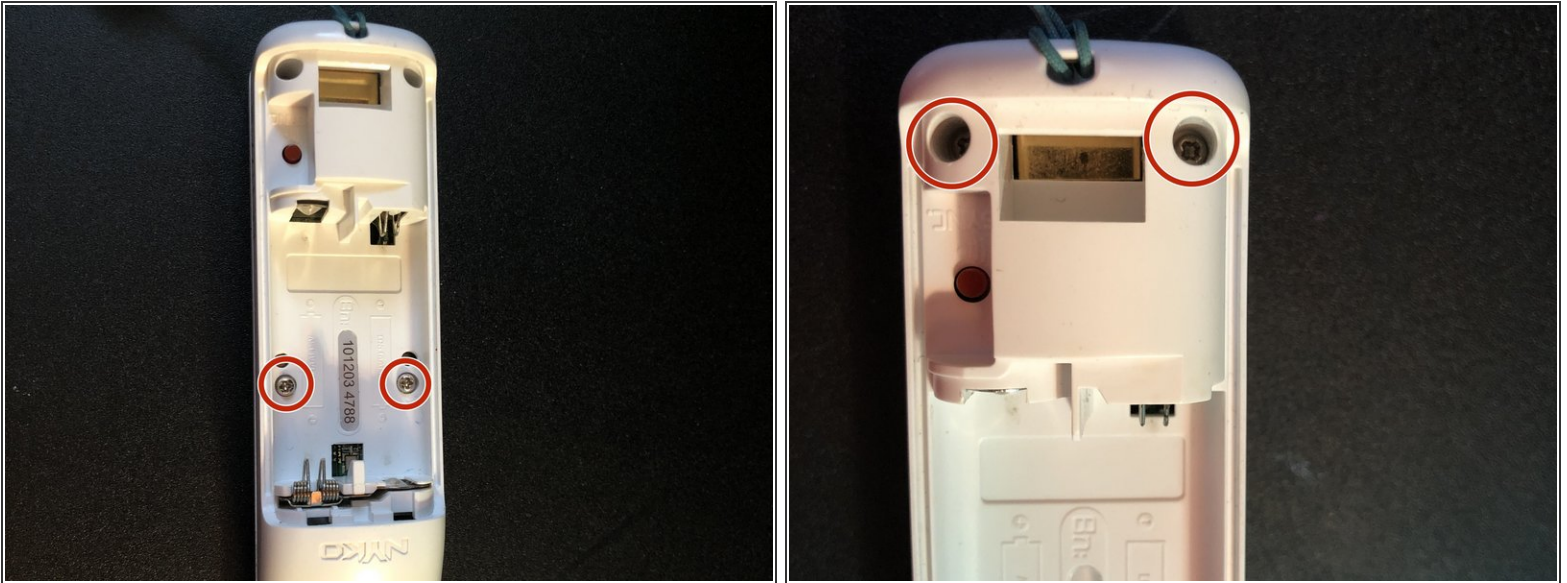
- First flip controller so that the back plate faces you
- Remove the battery cover by pushing up on the bottom plate

## Step 2



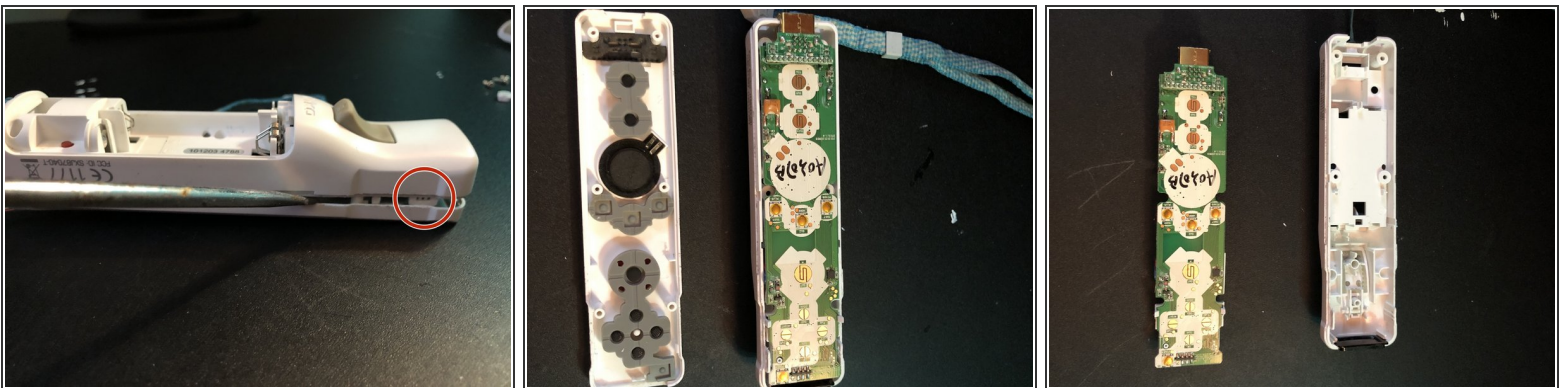
- Remove both batteries if their are any inside the remote .
- To remove them press down on the positive end then pull to take out

### Step 3



- Using the tri-point Y1 Screw driver remove the two center screws by turning counter clock wise
- Repeat process for bottom two

### Step 4

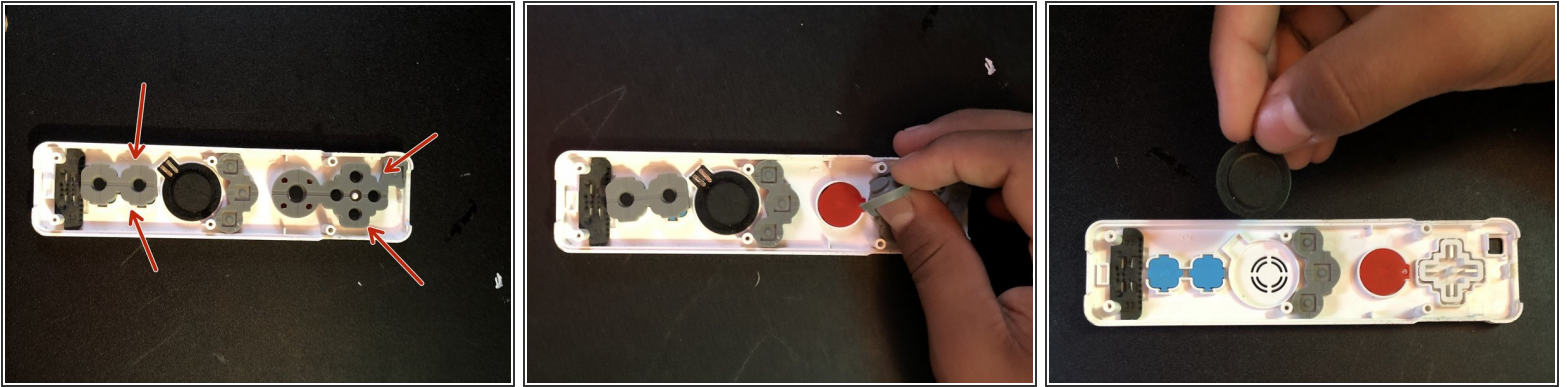


- To fully take off the back piece you will have to use your flat head screw driver and gently go along the edge and unclip it.
- Gently pull out the whole circuit board ( be careful you may break or rip a wire if you pull to hard )

⚠ {CAUTION :WATCH OUT FOR SMALL PARTS}



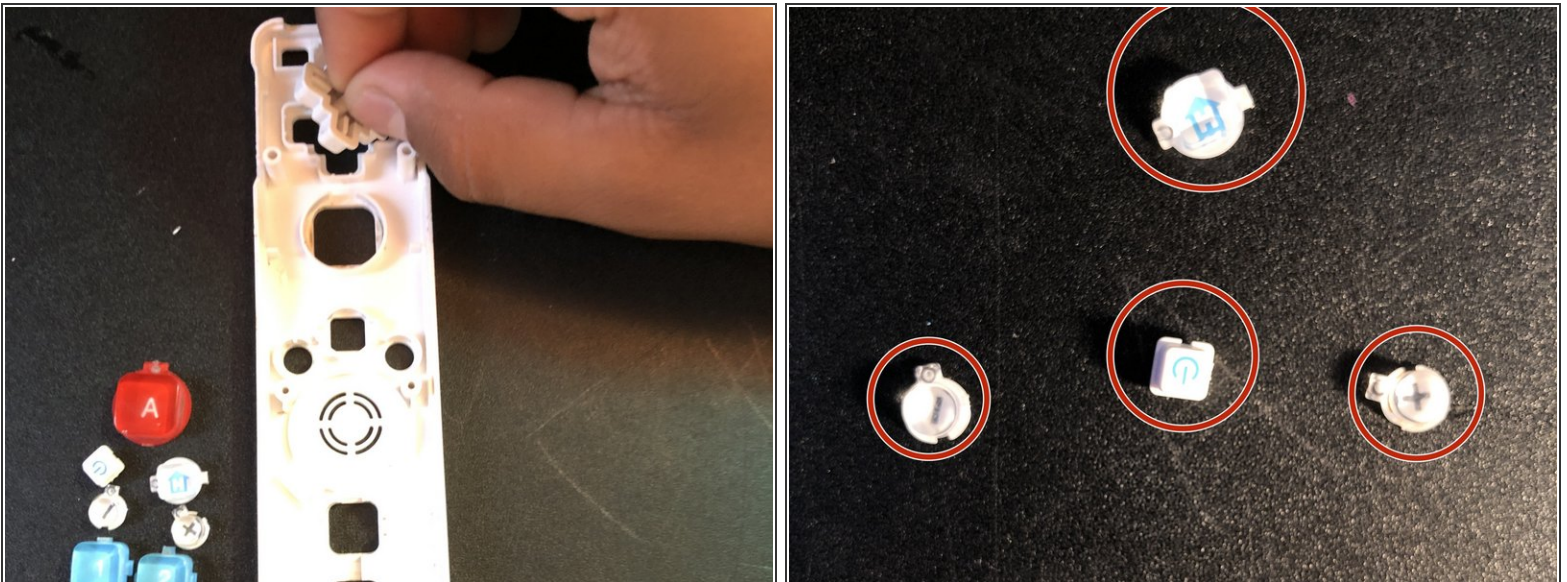
## Step 5



- To remove the buttons you will simply have to take off the grey silicon cover.
- To remove the small speaker you can simply pull up .

⚠ CAUTION : FOR SMALLER BUTTONS LIKE THE VOLUME ONES .

## Step 6



- Gently pry the buttons upwards ,removing the buttons from its holding slot.
- CAUTION : WATCH OUT FOR SMALL BUTTONS !

ⓘ IF YOU WANT TO REBUILD IT FOLLOW STEPS 1-7 BACKWORDS.